



FORUM VIRIUM HELSINKI

Anne-Mari Sandell

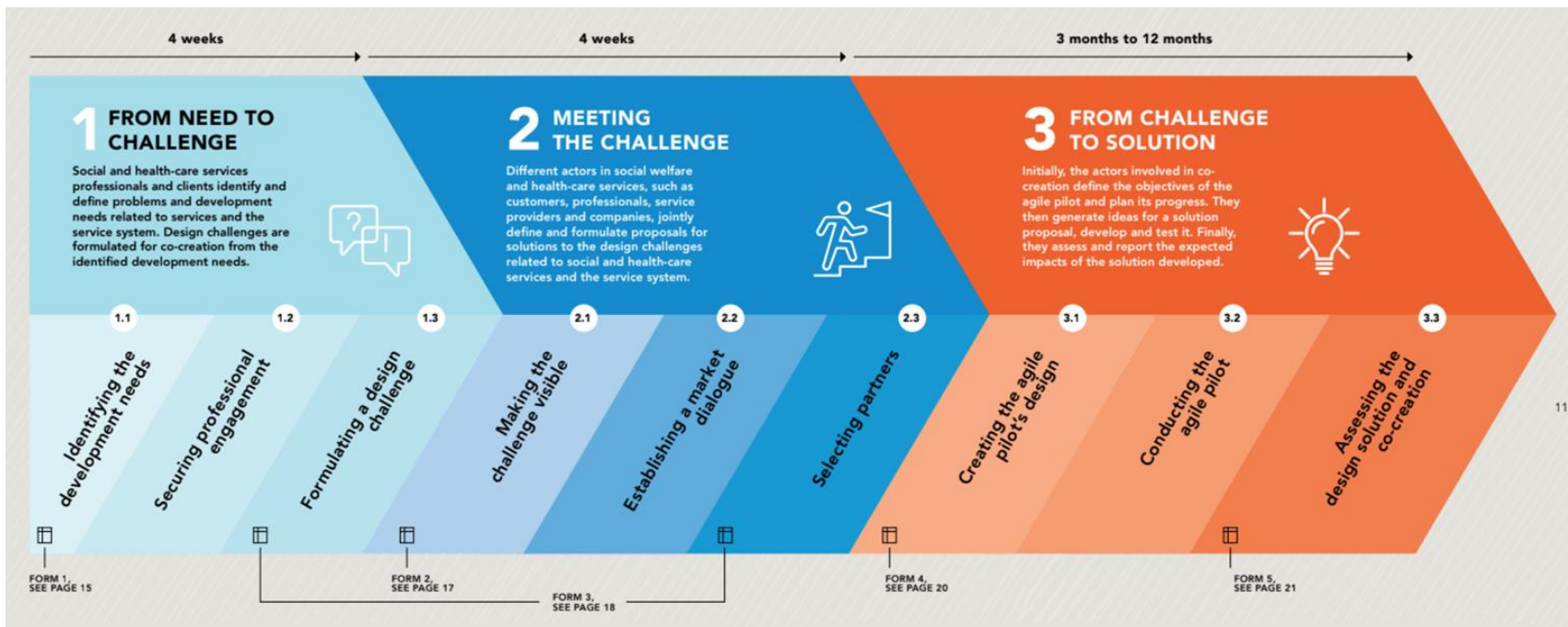
16.6.2022



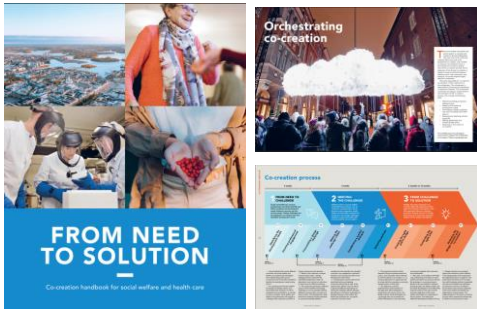
Developing smart healthcare services

- 14 years of co-creation in the healthcare field
- More than 70 new technology piloted
- 100+ partners
- 30+ countries
- 200+ companies
- Most of the pilots based on EU funding

Need based co-creation process



Co-creation Method – Handbook for Social Welfare and Health Care



New Method

- The operating model makes it possible to solve various challenges together with companies



Method evaluation:

- 35 Agile pilots
- 148 Companies
- 830 Healthcare professionals
- 1490 patients



Method achievements

- More permanent solutions
- Support decision-making
- Increasing competence
- Copy success

Co-creation case examples

Social robot SARA



- 3/4 nurses is experiencing a problematic workload.
- SARA robot provides dementia patients with meaningful social interactions and helps to maintain their cognitive abilities.
- Music, photos, games and exercises could be viewed on the touch screen and SARA was also able to have simple discussions.
- SARA was also tested in Kaatsheuvel contemporary assisted living complex

FORUM
VIRIUM
HELSINKI

VIDEO: <https://youtu.be/NukwJN0zkSM>



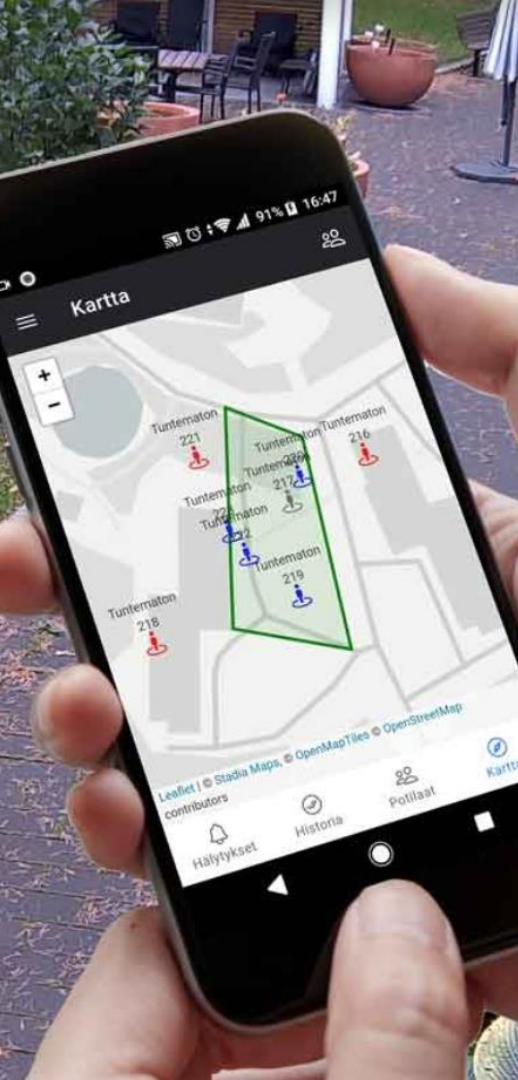
Multisensory room

- Three out of four seniors in long-term care suffer from memory disorders that often cause restlessness.
- Due the limited resources of the care staff, drugs are often used to calm the clients.
- A multisensory room was built to offer clients activities such as creating art or enjoying nature excursions.



RAI (Resident Assessment Instrument) & CHES study

- The use of psychopharmaceuticals during the trial decreased
- The indicators for depression and anxiety decreased
- The cognitive capacity of the clients in the test group remained unchanged
- The health stability of clients improved slightly
- Care staff sick leave decreased



Mobile App enabling outdoor activities

- Outdoor activities are often limited due to the limited staff resources even when many clients with memory disorders wish to go out every day.
- Mobile application based on artificial intelligence enables safe, independent movement of seniors.
- Clients are identified indoors, only after this doors are opened and lift sent to a correct floor.
- Nurses monitor outdoor activities via mobile application in real-time. Alerts when client falls down, moves too far or is outdoor for too long.
- System does not record any personal data.



Radio wave radar

- Camera-free imaging radar sensors provide constant supervision, while maintaining privacy at all times.
- Transmits signals scanning the environment thousands of times on radio waves weaker than a cell phone.
- Detects when a person falls. Also collects information that can be used to track activity patterns and identify signs of deteriorating health.
- Each device has a range of 4 meters to the front and 2 meters either side.

Freja shower robot



- For the elderly, Freja delivers increased independence and integrity.
- Care staff does not have to do heavy lifting or work on a slippery floor.
- Ergonomic chair carries the elderly into the cabin. Multiple shower heads.
- Controlled by both users and staff.
- Can be installed in all normal apartments and is digitally connected via mobile networks or internet.

VIDEO: <https://youtu.be/Wqg41EW5ug4>

Thank you!

anne-mari.sandell@forumvirium.fi

www.forumvirium.fi

@ForumVirium